

## Żurawie wielkopolska

aleja Niepodległości 36  
61-714 Poznań

tel. +48 519106906

tel. +48 662293528

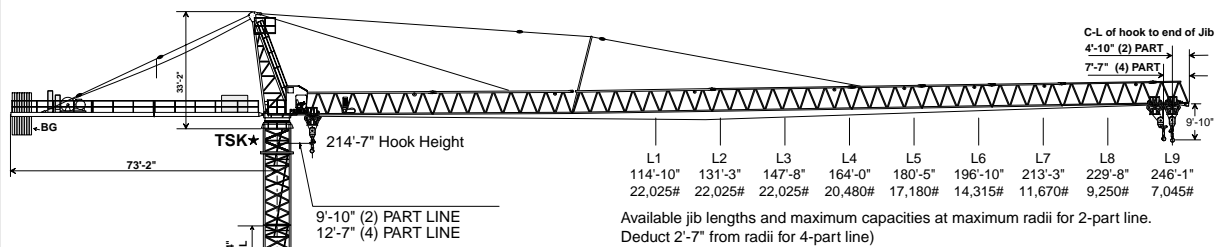
kontakt@zurawie-wielkopolska.pl



# PEINER SK 415

Hammerhead Tower Crane  
22,025 – 44,050 lbs. (10 – 20 t)  
Lifting Capacity\*

## SPECIFICATIONS



## HOOK HEIGHT TABLE

★Version "A" (Without TSK 212 Section)		Version "A" (With TSK 212 Section)		Cross and Rail Mount (Without TSK 212 Section)	
TOWER TYPE	HOOK HEIGHT ft/m	TOWER TYPE	HOOK HEIGHT ft/m	TOWER TYPE	HOOK HEIGHT ft/m
TS212.1		TS 212.1 +TSK 212		TSV 212/ TS 212.1	
11 x TS 212.1	208'-0"/63.4m**	11 x TS 212.1	214'-7"/65.4m**	1 x TSV 212	218'-6"/66.6m**
10 x TS 212.1	188'-8"/57.5m	10 x TS 212.1	195'-3"/59.5m	10 x TS 212.1	
9 x TS 212.1	169'-3"/51.6m	9 x TS 212.1	175'-10"/53.6m	1 x TSV 212	199'-2"/60.7m
8 x TS 212.1	149'-11"/45.7m	8 x TS 212.1	156'-6"/47.7m	9 x TS 212.1	1 x TSV 212
7 x TS 212.1	130'-7"/39.8m	7 x TS 212.1	137'-2"/41.8m	8 x TS 212.1	179'-9"/54.8m
6 x TS 212.1	111'-3"/33.9m	6 x TS 212.1	117'-10"/35.9m	1 x TSV 212	160'-5"/48.9m
5 x TS 212.1	91'-10"/28.0m	5 x TS 212.1	98'-5"/30.0m	7 x TS 212.1	1 x TSV 212
4 x TS 212.1	72'-6"/22.1m	4 x TS 212.1	79'-1"/24.1m	6 x TS 212.1	141'-1"/43.0m
3 x TS 212.1	53'-2"/16.2m	3 x TS 212.1	59'-9"/18.2m	1 x TSV 212	121'-9"/37.1m
2 x TS 212.1	33'-10"/10.3m	2 x TS 212.1	40'-5"/12.3m	5 x TS 212.1	1 x TSV 212
The above uses standard FF 212 anchor stools.					
<p>★ TSK 212 section MUST be installed for any top climbing applications.</p> <p>**Lower climbing unit if utilized.</p> <p>Tower configurations based on 95 mph wind speeds.</p>					
<p>NOTE: ADD 6' 7" TO THE ABOVE HOOK HEIGHT IF TSK 212 SECTION IS UTILIZED.</p>					

\*Optional hoist winches allow maximum capacities to be increased to 25,555 – 55,115 lbs. (12.5 – 25.0 t) lifting capacity. Contact factory for details.

Machines shown may have optional equipment.

simple, available and cost effective™



**LOAD CHARTS FOR 2-PART LINE (US / METRIC)**



**2-PART LINE WB 76-100/4F ~108 HP (76 kW) Hoist Winch**  
(pounds / feet)

(metric tons / meters)

Hook Radius [ft.]	AVAILABLE JIB LENGTHS IN FEET								
	L9	L8	L7	L6	L5	L4	L3	L2	L1
▼	246	229.6	213.2	196.8	180.4	164	147.6	131.2	114.8
9.8	22025	22025	22025	22025	22025	22025	22025	22025	22025
101.7	22025	22025	22025	22025	22025	22025	22025	22025	22025
105.0	21880	22025	22025	22025	22025	22025	22025	22025	22025
108.2	21085	22025	22025	22025	22025	22025	22025	22025	22025
111.5	20340	22025	22025	22025	22025	22025	22025	22025	22025
<b>114.8</b>	<b>19635</b>	<b>22025</b>	<b>22025</b>	<b>22025</b>	<b>22025</b>	<b>22025</b>	<b>22025</b>	<b>22025</b>	<b>22025</b>
118.1	18975	21770	22025	22025	22025	22025	22025	22025	
121.4	18350	21065	22025	22025	22025	22025	22025	22025	
124.6	17755	20400	22025	22025	22025	22025	22025	22025	
127.9	17195	19770	22025	22025	22025	22025	22025	22025	
<b>131.2</b>	<b>16660</b>	<b>19170</b>	<b>21480</b>	<b>22025</b>	<b>22025</b>	<b>22025</b>	<b>22025</b>	<b>22025</b>	
134.5	16155	18605	20855	22025	22025	22025	22025		
137.8	15670	18060	20260	22025	22025	22025	22025		
141.0	15215	17545	19695	21575	22025	22025	22025		
144.3	14775	17055	19150	20990	22025	22025	22025		
<b>147.6</b>	<b>14355</b>	<b>16585</b>	<b>18635</b>	<b>20430</b>	<b>21905</b>	<b>22025</b>	<b>22025</b>		
150.9	13955	16135	18140	19900	21335	22025			
154.2	13575	15705	17665	19385	20795	22025			
157.4	13210	15295	17215	18900	20275	21505			
160.7	12855	14900	16780	18430	19780	20985			
<b>164.0</b>	<b>12520</b>	<b>14520</b>	<b>16365</b>	<b>17980</b>	<b>19300</b>	<b>20480</b>			
167.3	12195	14160	15965	17545	18840				
170.6	11885	13810	15580	17130	18400				
173.8	11585	13475	15210	16735	17980				
177.1	11300	13150	14855	16350	17570				
<b>180.4</b>	<b>11020</b>	<b>12840</b>	<b>14510</b>	<b>15980</b>	<b>17180</b>				
183.7	10755	12540	14180	15620					
187.0	10495	12250	13865	15275					
190.2	10250	11970	13555	14945					
193.5	10010	11700	13260	14625					
<b>196.8</b>	<b>9775</b>	<b>11440</b>	<b>12970</b>	<b>14315</b>					
200.1	9550	11190	12695						
203.4	9335	10945	12425						
206.6	9125	10710	12165						
209.9	8920	10480	11915						
<b>213.2</b>	<b>8725</b>	<b>10260</b>	<b>11670</b>						
216.5	8535	10045							
219.8	8350	9835							
223.0	8170	9635							
226.3	7995	9440							
229.6	7825	9250							
<b>229.6</b>	<b>7825</b>	<b>9250</b>							
232.9	7660								
236.2	7500								
239.4	7345								
242.7	7195								
<b>246.0</b>	<b>7045</b>								

Hook Radius [m.]	AVAILABLE JIB LENGTHS IN METERS								
	L9 (75m)	L8 (70m)	L7 (65m)	L6 (60m)	L5 (55m)	L4 (50m)	L3 (45m)	L2 (40m)	L1 (35m)
▼									
3.00	10.00	10.00	10.00	10.00	10.00	10.00	10.00	10.00	10.00
31.00	10.00	10.00	10.00	10.00	10.00	10.00	10.00	10.00	10.00
32.00	9.93	10.00	10.00	10.00	10.00	10.00	10.00	10.00	10.00
33.00	9.57	10.00	10.00	10.00	10.00	10.00	10.00	10.00	10.00
34.00	9.23	10.00	10.00	10.00	10.00	10.00	10.00	10.00	10.00
<b>35.00</b>	<b>8.92</b>	<b>10.00</b>	<b>10.00</b>	<b>10.00</b>	<b>10.00</b>	<b>10.00</b>	<b>10.00</b>	<b>10.00</b>	<b>10.00</b>
36.00	8.62	9.88	10.00	10.00	10.00	10.00	10.00	10.00	
37.00	8.33	9.57	10.00	10.00	10.00	10.00	10.00	10.00	
38.00	8.06	9.26	10.00	10.00	10.00	10.00	10.00	10.00	
39.00	7.81	8.98	10.00	10.00	10.00	10.00	10.00	10.00	
<b>40.00</b>	<b>7.56</b>	<b>8.70</b>	<b>9.75</b>	<b>10.00</b>	<b>10.00</b>	<b>10.00</b>	<b>10.00</b>	<b>10.00</b>	
41.00	7.34	8.45	9.47	10.00	10.00	10.00	10.00		
42.00	7.12	8.20	9.20	10.00	10.00	10.00	10.00		
43.00	6.91	7.97	8.94	9.80	10.00	10.00	10.00		
44.00	6.71	7.74	8.70	9.53	10.00	10.00	10.00		
<b>45.00</b>	<b>6.52</b>	<b>7.53</b>	<b>8.46</b>	<b>9.28</b>	<b>9.94</b>	<b>10.00</b>	<b>10.00</b>		
46.00	6.34	7.33	8.24	9.03	9.69	10.00			
47.00	6.16	7.13	8.02	8.80	9.44	10.00			
48.00	6.00	6.94	7.82	8.58	9.21	9.77			
49.00	5.84	6.77	7.62	8.37	8.98	9.53			
<b>50.00</b>	<b>5.69</b>	<b>6.59</b>	<b>7.43</b>	<b>8.16</b>	<b>8.76</b>	<b>9.30</b>			
51.00	5.54	6.43	7.25	7.97	8.56				
52.00	5.40	6.27	7.07	7.78	8.36				
53.00	5.26	6.12	6.91	7.60	8.16				
54.00	5.13	5.97	6.74	7.42	7.98				
<b>55.00</b>	<b>5.01</b>	<b>5.83</b>	<b>6.59</b>	<b>7.26</b>	<b>7.80</b>				
56.00	4.88	5.69	6.44	7.09					
57.00	4.77	5.56	6.29	6.94					
58.00	4.65	5.44	6.16	6.79					
59.00	4.55	5.31	6.02	6.64					
<b>60.00</b>	<b>4.44</b>	<b>5.20</b>	<b>5.89</b>	<b>6.50</b>					
61.00	4.34	5.08	5.76						
62.00	4.24	4.97	5.64						
63.00	4.14	4.86	5.52						
64.00	4.05	4.76	5.41						
<b>65.00</b>	<b>3.96</b>	<b>4.66</b>	<b>5.30</b>						
66.00	3.88	4.56							
67.00	3.79	4.47							
68.00	3.71	4.38							
69.00	3.63	4.29							
70.00	3.55	4.20							
<b>70.00</b>	<b>3.55</b>	<b>4.20</b>							
71.00	3.48								
72.00	3.41								
73.00	3.34								
74.00	3.27								
<b>75.00</b>	<b>3.20</b>								

"A"	7045	9250	11670	14315	17180	20480	22025	22025	22025
"B"	246	229.6	213.2	196.8	180.4	164	147.6	131.2	114.8
"C"	103.6	116.8	128.5	139.1	147.6	155.1	147.6	131.2	114.8

"A"	3.2	4.2	5.3	6.5	7.8	9.3	10	10	10
"B"	75	70	65	60	55	50	45	40	35
"C"	31.6	35.6	39.2	42.4	45.0	47.3	45	40	35

"A"= Load at maximum radius (pounds)  
 "B"= Maximum radius (feet)  
 "C"= Radius with maximum load (feet)

"A"= Load at maximum radius (metric tons)  
 "B"= Maximum radius (meters)  
 "C"= Radius with maximum load (meters)



Machines shown may have optional equipment.

simple, available and cost effective™





**TECHNICAL DATA**

<b>FU 8-200/4</b>		<b>0 to 265 fpm / 0 to 80 m/min</b>				<b>1 x 14.2 HP / 1 x 10.5 kW</b>	
<b>SR 10-190/3</b>		<b>0 to 100 fpm / 0 to 30m/min</b>				<b>4 x 11.9 HP / 4 x 8.8 kW</b>	
<b>K WB 120/4</b>		<b>0 to 1 rpm</b>				<b>L1 to L5 Jibs L6 to L9 Jibs</b>	
<b>STANDARD HOIST UNIT</b> SR WB 76-100/4F (108 HP)						Maximun hook heights ft./ m	
		<b>fpm</b> m/min	<b>lbs.</b> kg	<b>fpm</b> m/min	<b>lbs.</b> kg		
		<b>440</b> 134	<b>5500</b> 2500	<b>220</b> 67	<b>11000</b> 5000	<b>820 ft</b> (5 Layers) 250 m	<b>410 ft</b> (5 Layers) 125 m
		<b>275</b> 84	<b>9300</b> 4200	<b>138</b> 42	<b>18600</b> 8400	Total motor output approx. 195 HP	
		<b>177</b> 54	<b>14700</b> 7100	<b>89</b> 27	<b>29400</b> 14200	Without SR 10-190/3 approx. 148 HP	
		<b>110</b> 34	<b>22000</b> 10000	<b>55</b> 17	<b>44000</b> 20000	Connected Power 205 kVA	

Recommended dedicated service: 440 - 480 VAC 3-Phase 250 amp service. Measured under nominal load at the turntable of the tower crane. Speeds and power calculated using 480VAC @ 60 Hertz.

<b>OPTIONAL HOIST UNIT</b> SR WB 122-125/4F (167 HP)						Maximun hook heights ft./ m	
		<b>fpm</b> m/min	<b>lbs.</b> kg	<b>fpm</b> m/min	<b>lbs.</b> kg		
		<b>440</b> 134	<b>7700</b> 3500	<b>220</b> 67	<b>15400</b> 7000	<b>984 ft</b> (6 Layers) 300 m	<b>492 ft</b> (6 Layers) 150 m
		<b>275</b> 84	<b>13200</b> 6000	<b>138</b> 42	<b>26400</b> 12000	Total motor output approx. 260 HP	
		<b>177</b> 54	<b>22000</b> 10000	<b>89</b> 27	<b>44000</b> 20000	Without SR 10-190/3 approx. 212 HP	
		<b>110</b> 34	<b>27600</b> 12500	<b>55</b> 17	<b>55200</b> 25000	Connected Power 290 kVA	

Recommended dedicated service: 440 - 480 VAC 3-Phase 300 amp service. Measured under nominal load at the turntable of the tower crane. Speeds and power calculated using 480VAC @ 60 Hertz.

**COUNTERWEIGHT (BG) FOR SR WB 76-100/4F OR SR WB 122-125/4F**

JIB LENGTH	L1	L2	L3	L4	L5	L6	L7	L8	L9
<b>Lbs.</b>	<b>41010</b>	<b>41010</b>	<b>47845</b>	<b>47845</b>	<b>47845</b>	<b>54680</b>	<b>54680</b>	<b>54680</b>	<b>54680</b>
metric tons	18.6	18.6	21.7	21.7	21.7	24.8	24.8	24.8	24.8
<b>Lbs.</b>	<b>6x6835</b>	<b>6x6835</b>	<b>7x6835</b>	<b>7x6835</b>	<b>7x6835</b>	<b>8x6835</b>	<b>8x6835</b>	<b>8x6835</b>	<b>8x6835</b>
metric tons	6x3.1	6x3.1	7x3.1	7x3.1	7x3.1	8x3.1	8x3.1	8x3.1	8x3.1

NOTE: Information contained in this specification sheet is of a general nature and Operators Manual should be consulted and adhered to.

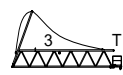


WEIGHTS AND MEASURES*				5		
Description	Illustration	Dimensions ft. / m.			Weight lbs./ tons (metric)	Assembled Components Information Length and weight in <b>pounds</b> and metric tons*
		L.	W.	H.		
TS 212 and 212.1 Anchor Stools		3'-2" / .965m	2'-0" / .609m	2'-0" / .609m	850lbs. / .385t	
TS 213 and 213.1 Anchor Stools		5'-5" / 1.65m	2'-2" / .66m	2'-2" / .66m	1100lbs. / .499t	
U821 Base Cross for TS212 & 212.1 Tower		34'-7" / 10.54m	9'-1" / 2.76m	2'-9" / .838m	17,100lbs. / 7.76t	
TSV 212.1 Tower Section for U821 cross		31'-2" / 9.50m	9'-10" / 3.00m	10'-0" / 3.05m	20,500lbs. / 9.30t	
TS 213 and 213.1 Tower Section		19'-6" / 5.94m	8'-0" / 2.44m	8'-0" / 2.44m	9,950lbs. / 4.52t	
TS 213 to TS212 Tower Transition Section		19'-6" / 5.94m	8'-0" / 2.44m	8'-0" / 2.44m	9,750lbs. / 4.42t	
TS 212 and 212.1 Tower Section		19'-6" / 5.94m	8'-0" / 2.44m	8'-0" / 2.44m	9,300lbs. / 4.22t	
TSK 212 Tower Section		8'-0" / 2.44m	9'-10" / 3.00m	6'-8" / 2.03m	6,175lbs. / 2.80t	
TSK 212 Tie-in Collar		12'-2" / 3.70m	10'-2" / 3.10m	1'-7" / 0.48m	3,200lbs. / 1.45t	
TS 212 Top Climbing Section (w / items inside)		29'-3" / 8.92m	11'-6" / 3.50m	11'-6" / 3.50m	25,000lbs. / 11.34t	
TS 213/212 Top Climbing Section (w / items inside)		29'-3" / 8.92m	11'-6" / 3.50m	11'-6" / 3.50m	25,850lbs. / 11.36t	
Turntable only w / 3 swing motors		11'-4" / 3.45m	7'-8" / 2.34m	6'-7" / 2.01m	23,850lbs. / 10.80t	
Turntable Top portion only w / 3 swing motors		11'-4" / 3.45m	7'-8" / 2.34m	4'-9" / 1.45m	9,350lbs. / 4.22t	
Turntable Race Bearing only		7'-2" / 2.19m	7'-2" / 2.19m	0'-6" / 0.15m	3,250lbs. / 1.40t	
Turntable Lower portion only DA 212		9'-10" / 3.00m	7'-8" / 2.34m	1'-8" / 0.50m	11,250lbs. / 4.90t	
Operatos Cabin, Catwalk and Electric panel		8'-2" / 2.50m	6'-9" / 2.06m	8'-6" / 2.60m	3,750lbs. / 1.73t	
Turntable Complete w/cabin and 3 swing motors		17'-2" / 5.23m	14'-2" / 4.32m	12'-4" / 3.75m	27,600lbs. / 12.52t	
Towertop w / catwalk and ladder		27'-1" / 8.26m	6'-5" / 2.00m	6'-6" / 2.00m	9,600lbs. / 4.36t	
108 HP Machinery Deck w/o wire rope		9'-2" / 2.80m	8'-5" / 2.57m	5'-7" / 1.70m	7,500lbs. / 3.40t	
108 HP Machinery Deck w/ Rear portion of Counterjib		38'-1" / 11.61m	9'-2" / 2.80m	6'-7" / 2.01m	17,500lbs. / 7.94t	
Front portion of Counterjib		31'-10" / 9.70m	6'-8" / 2.03m	5'-7" / 1.70m	6,610lbs. / 2.30t	
108 HP Counterjib complete less wire rope		69'-11" / 21.31m	9'-2" / 2.80m	6'-7" / 2.01m	26,500lbs. / 12.02t	
Jib Section No. 1 w / Trolley machinery		38'-11" / 11.86m	6'-6" / 2.00m	7'-3" / 2.20m	6,650lbs. / 3.01t	
Jib Section No. 2		40'-6" / 12.34m	6'-6" / 2.00m	7'-3" / 2.20m	5,175lbs. / 2.35t	
Outer Jib Support "A" Frame		21'-7" / 6.58m	5'-5" / 1.65m	4'-8" / 1.42m	650lbs. / 0.30t	
Jib Section No. 3		38'-10" / 11.84m	6'-6" / 2.00m	7'-7" / 2.31m	4,750lbs. / 2.16t	
Jib Section No. 4		18'-8" / 5.69m	6'-6" / 2.00m	6'-3" / 1.91m	2,000lbs. / 0.91t	
Jib Section No. 5		35'-0" / 10.67m	6'-6" / 2.00m	6'-11" / 2.10m	4,000lbs. / 1.82t	
Jib Section No. 6		35'-5" / 10.80m	6'-6" / 2.00m	6'-4" / 1.93m	3,000lbs. / 1.36t	
Jib Section No. 7		33'-6" / 10.21m	6'-6" / 2.00m	6'-3" / 1.91m	2,150lbs. / 0.98t	
Jib Section No. 8		17'-1" / 5.69m	6'-6" / 2.00m	6'-2" / 1.88m	1,750lbs. / 0.80t	
Jib Tip Section		4'-6" / 1.37m	6'-8" / 2.03m	4'-6" / 1.37m	850lbs. / 0.39t	
Single (outer) Trolley for 2-Part Line		7'-4" / 2.24m	5'-9" / 1.73m	6'-0" / 1.83m	1,750lbs. / 0.80t	
Single Load Block for 2-Part Line		2'-9" / 0.84m	1'-0" / 0.31m	4'-6" / 1.37m	1,200lbs. / 0.54t	
Double Trolley for 4-Part Line		14'-8" / 4.47m	5'-9" / 1.73m	6'-0" / 1.83m	3,400lbs. / 1.55t	
Dual Load Block for 4-Part Line		5'-6" / 1.68m	1'-0" / 0.31m	4'-6" / 1.37m	2,400lbs. / 1.09t	
BG Counterweight		14'-8" / 4.47m	0'-6" / 0.15m	5'-1" / 1.55m	6,800lbs. / 3.09t	

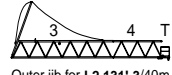
108 HP Counterjib Complete (less Wirerope) 70'/21.33m - 26,500 lbs./ 12.02 t  
 167 HP Counterjib Complete (less Wirerope) 70'/21.33m - 29,000 lbs./ 13.16 t  
 22mm Wirerope weighs - 2.0 lbs/foot/2.7kg/m



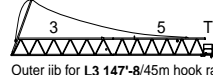
Inner jib with one trolley, load block, and suspension cables 75'/22.86m - 18,050lbs./7.77t



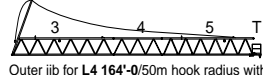
Outer jib for L1 114'-10'/35m hook radius with suspension cables 42'/12.80m - 7,960lbs./3.61t



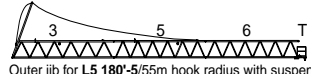
Outer jib for L2 131'-3'/40m hook radius with suspension cables 60'/18.29m - 9,960lbs./4.52t



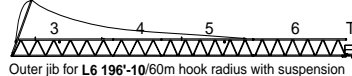
Outer jib for L3 147'-8'/45m hook radius with suspension cables 76'/23.16m - 12,200lbs./5.54t



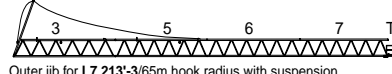
Outer jib for L4 164'-0'/50m hook radius with suspension cables 95'/28.96m - 14,510lbs./6.58t



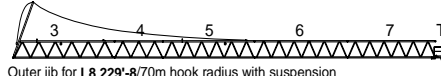
Outer jib for L5 180'-5'/55m hook radius with suspension cables 111'/33.83m - 15,200lbs./6.90t



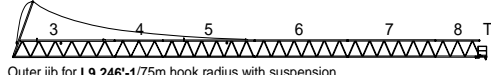
Outer jib for L6 196'-10'/60m hook radius with suspension cables 129'/39.32m - 17,510lbs./7.95t



Outer jib for L7 213'-3'/65m hook radius with suspension cables 145'/44.20m - 17,350lbs./7.87t



Outer jib for L8 229'-8'/70m hook radius with suspension cables 163'/49.68m - 19,660lbs./8.92t



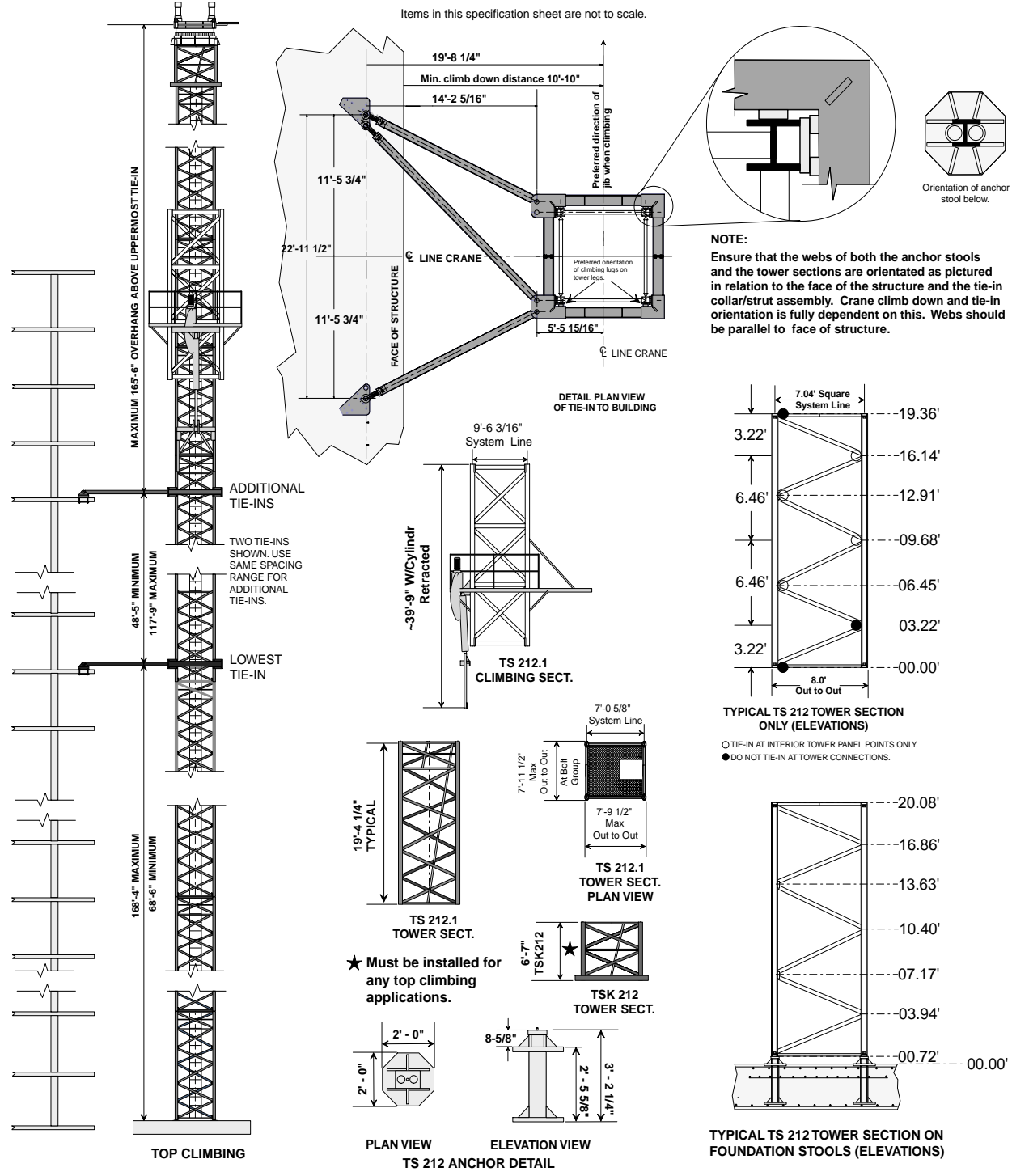
Outer jib for L9 246'-1'/75m hook radius with suspension cables 180'/54.86m - 21,410lbs./9.71t

\*Any printed weights should be confirmed in the field and adjustments made to lifting equipment if required. Do not scale any information within this specification sheet.

\*The operators manual should be used for for crane assembly/disassembly. Sizes and weights shown herein are for general illustration and are approximate in scope.



**USEFUL ERECTION INFORMATION**



We reserve the right to amend these specifications at any time without notice. The only warranty applicable is our standard written warranty applicable to the particular product and sale. We make no other warranty, expressed or implied.

For more information, product demonstration, or details on lease and rental plans, please contact your local Terex Towers Distributor.

**Bigge Crane and Rigging Co.**

10700 Bigge Avenue  
San Leandro, CA 94577  
Phone: (888) 337-BIGGE or (510) 638-8100  
Fax: (510) 639-4053  
Email: towers@bigge.com  
Web site: www.biggetowercrane.com

**Zurawie wielkopolska**

aleja Niepodległości 36  
61-714 Poznań

tel. +48 519106906

tel. +48 662293528

kontakt@zurawie-wielkopolska.pl

